

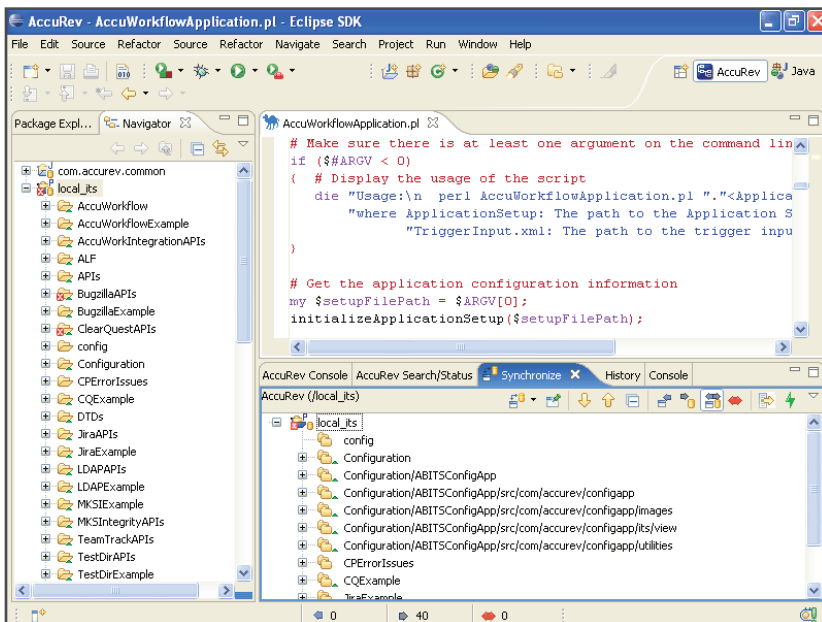
Eclipse Plug-in for AccuRev

The Eclipse Plug-in for AccuRev provides developers and release engineers with an out-of-the-box robust integration between AccuRev® software configuration management (SCM) and the industry-leading Eclipse IDE platform. Combining Eclipse with the power of AccuRev software in a single integrated development environment increases the agility, reliability, and quality of your geographically distributed, parallel and Agile software development process.

The Power of AccuRev

AccuRev's software configuration management (SCM) solution is architected to solve the problems associated with today's complex software development environments, while bridging the needs of both developers and managers to improve productivity and lower total cost of ownership. The AccuRev interface, with integrated issue-based workflow, advanced visualization, process automation, and artifact traceability, improves collaboration, visibility and management of multiple, parallel releases, and enables geographically distributed and outsourced teams to remain agile and competitive.

AccuRev is a best-of-breed software configuration management (SCM) solution, which often forms the core of an ALM framework, with unique capabilities that enhance and extend complementary development tools.



The Eclipse Plug-in for AccuRev provides a full implementation of the Team Sync View, and shows file decorations for each file's AccuRev status. The AccuRev perspective groups common views together to simplify working with AccuRev in Eclipse.

Features

- AccuRev Perspective provides the appropriate visible actions and views to facilitate virtually all common AccuRev operations so developers can "live in Eclipse" and still derive all the benefits of AccuRev
- Change Package integration with Eclipse provides full-featured issue-based software development
- AccuRev Project Wizard enables easy creation of Eclipse projects from AccuRev controlled source code
- Full support for the Eclipse native Diff and Merge tools
- New history actions: Browse and Diff against active history; "Compare With" menu exposed for differencing between private workspace and history; populate workspace with selected version
- Full support for the Eclipse native History view
- Full support for the Eclipse Team Synchronization view
- Visual indicator icons increase visibility of project activities
- Full access to AccuRev element status queries directly within Eclipse

The Advantage

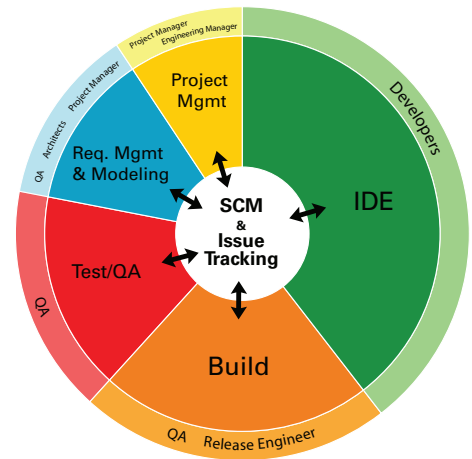
- The Eclipse Plug-in for AccuRev provides developers transparent access to the power of AccuRev without leaving their Eclipse IDE
- Eclipse is an ideal platform for integrating best-of-breed Application Lifecycle Management (ALM) solutions. SCM vs. ALM
- AccuRev provides robust integration with the open Eclipse platform, with improved usability for developers and rich exposure of AccuRev functionality within the Eclipse environment.
- Full integration between Eclipse and AccuRev Change Packages enforces process and enables developers to interact with issue-based engineering workflow directly from Eclipse

This provides you with maximum control by offering the flexibility to choose the best lifecycle tool for your unique requirements, versus being locked in to a tool offered by a single-vendor suite. The result is an ideal mix of productivity with traceability and auditing for distributed, parallel projects and Agile teams of all sizes.

Integrate AccuRev and Eclipse

The Eclipse Plug-in for AccuRev enables developers to utilize much of the AccuRev workspace functionality without ever leaving their familiar Eclipse IDE environment. Eclipse developers gain a transparent, stable, and highly functional environment with stream-based process automation and private workspaces for doing complex, distributed application development. This includes performing common operations on workspaces, such as keep, promote, file moves, and file renames. Full integration between Eclipse and AccuRev change packages enables developers and release engineers to update issue status in AccuRev from within Eclipse.

The Eclipse Plug-in for AccuRev helps increase the visibility of project activities. For example, icons give visual indicators of file status, such as backed, stale, or overlapped, within Eclipse. All common AccuRev searches are available from Eclipse so that developers, release engineers, and managers can query the AccuRev server for the latest source code changes. Standard Eclipse views, including History, Team Synchronization, Merge and Diff enable developers to use familiar Eclipse tools backed by the advanced SCM capabilities of AccuRev.



AccuRev Integrations enables an optimal Best-of-Breed ALM solution

AccuRev

Contact AccuRev:

AccuRev Inc., 10 Maguire Road, Lexington, MA 02421
Phone: 800-383-8170 | Email: sales@accurev.com | www.accurev.com

© 2010 v50. All Rights Reserved. AccuRev, AccuWork, AccuReplica, and AccuBridge are all trademarks or registered trademarks of AccuRev Inc. All other marks are property of their respective owners.