

AccuSync for ClearCase

There's a growing acceptance in the market that organizations will have a heterogeneous software development environment with multiple SCM solutions in order to provide different user communities the most appropriate tool for their requirements.

AccuSync for ClearCase® provides coexistence for optimal support of parallel, geographically distributed and Agile development with AccuRev in existing ClearCase environments. This enables a best-of-breed coexistence strategy, where teams are able to use the most appropriate SCM solution for each group, project or user.

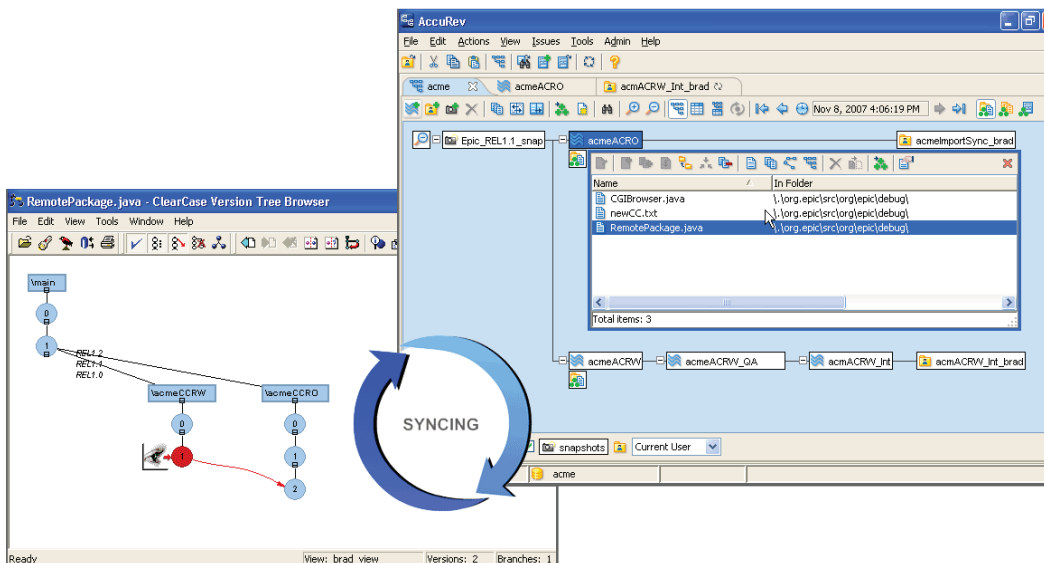
AccuSync for ClearCase allows for collaborative development between those groups using ClearCase and AccuRev via bi-directional synchronization. This enables true parallel or componentized development methodologies to be properly implemented and maintained across both systems without rework or porting.

Benefits:

- All development in AccuRev is automatically synched with ClearCase
- Zero downtime associated with introduction of AccuRev for new team(s)
- Older releases can be reproduced in either ClearCase or AccuRev
- Reproduction of older releases is never at risk. No costly time consuming re-verification

Ease & Flexibility

- Allows teams, projects and individual users to introduce AccuRev at their own pace
- Port build, test, packaging, deployment, triggers and scripts to AccuRev over time
- Introduce AccuRev into project at any point



With demands for increased number and frequency of product releases, software development organizations today have little time to devote to complete SCM tool conversions, and require a way to allow “right-sized” SCM options for different teams, projects and individual users depending on the use case. Some users may still require the entire infrastructure that was built around their ClearCase implementation, while some may prefer the flexibility and power of AccuRev for more Agile or complex parallel development practices.

Enabling choice and coexistence also mitigates the risk associated with “developer revolt,” where teams move to an inappropriate SCM tool that ends up costing an organization in lost productivity, quality or even missed customer commitments. With AccuSync for ClearCase, organizations can instead choose to use a mature, professional SCM tool that features an existing integration with IBM Rational ClearQuest and all the ease of use and functionality required to manage the most complex development scenarios as teams grow or turn over.

A Cost-Effective Alternative to ClearCase MultiSite

Organizations considering offshore or geographically distributed development scenarios using ClearCase now also have the option of using AccuRev as an alternative to ClearCase MultiSite replication, significantly lowering licensing and administration costs. The additional visibility provided by the AccuRev StreamBrowser™ also increases collaboration between disparate teams and ensures compliance of the development process.

“The middle ground between standalone SCM and a standardized SCCM solution focuses on integration of heterogeneous SCM tools with a single change management tool. Shops that implement this “heterogeneous SCM” strategy secure many of the benefits of a standardized SCCM solution without incurring the pain associated with SCM tool migration.”

Jeffrey Hammond

Senior Analyst, Application Development at Forrester Research, Standardized Software Change and Configuration Management: Achievable Goal Or Wishful Thinking, Oct. 2007.

“I spent two years writing wrappers to make ClearCase to do a small portion of what AccuRev does out-of-the-box. Anyone who has jockeyed ClearCase branches and config specs to create hierarchical code delivery models will immediately appreciate the power of the stream hierarchy. Not only does AccuRev support renaming and powerful merging, but the StreamBrowser’s visual presentation of the relationships makes it clear where the changes are, where they’ve come from, and how they got there. No more questions about config specs! The StreamBrowser is not only a powerful viewer, but also a full-featured drag-and-drop manager.”

Chris Walquist, of Walquist Consulting

AccuRev

Contact AccuRev:

AccuRev Inc., 10 Maguire Road, Lexington, MA 02421
Phone: 800-383-8170 | Email: sales@accurev.com | www.accurev.com

© 2011 v4.7 All Rights Reserved. AccuRev, AccuWork, AccuReplica, and AccuBridge are all trademarks or registered trademarks of AccuRev Inc. All other marks are property of their respective owners.