

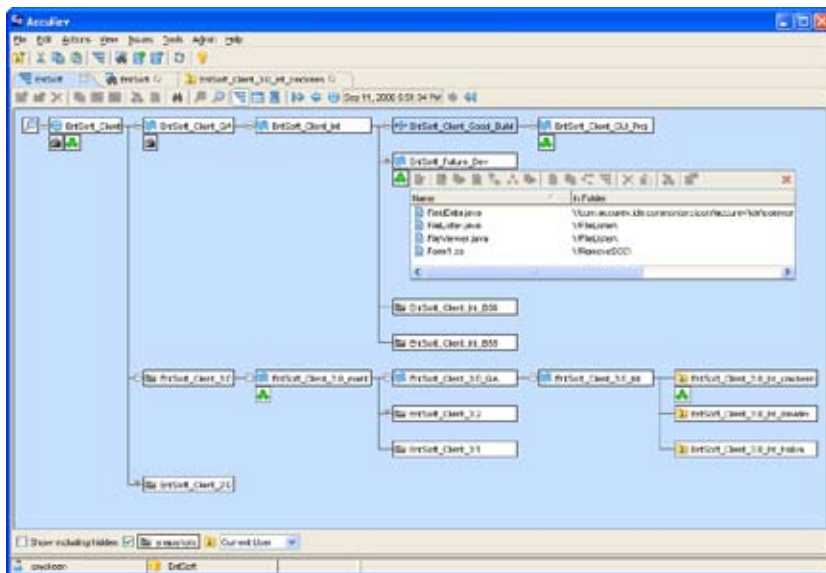
AccuBridge for HP Quality Center™

AccuBridge™ for HP Quality Center™ provides out-of-the-box integration between AccuRev® software and the issue management functionality of HP Quality Center. This allows you to quickly leverage the power of AccuRev's process change management with your existing HP Quality Center workflow. The result enhances your return on investment by increasing the agility, reliability, and quality of your distributed and parallel software development environment.

The Power of AccuRev

AccuRev® provides enterprise software configuration management (SCM) and architecturally enabled process model optimization for highly distributed and global application development. AccuRev's award-winning SCM architecture has been designed specifically to simplify complex parallel development projects, ensuring optimal team collaboration, outsourcing models, software asset reuse, and time to market that far exceeds the capabilities of legacy SCM tools.

AccuRev forms the core of a true best-of-breed application lifecycle management (ALM) solution, with unique capabilities which enhance and extend complementary development tools. This provides you with maximum control by offering the flexibility to choose the best lifecycle tool for your unique requirements, versus being locked in to a tool offered by a single-vendor suite. The result is an ideal mix of productivity with traceability and auditing for geographically distributed and parallel projects and teams of all sizes.



AccuRev's StreamBrowser provides instant visualization and dynamic graphical control of the development process.

Features

- Out-of-the-box integration between AccuRev software and HP Quality Center™ to enable robust integration between software asset changes and issue management
- Easy to customize, configure, and extend
- Supports bi-directional AccuRev Change Package integration for issue-based engineering utilizing HP Quality Center
- Synchronized updates between HP Quality Center and AccuRev
- AccuRev SCM and Change Package data mapped via XML to fields in HP Quality Center for easy tracking
- Integration of HP Quality Center issues and AccuRev SCM



i n v e n t

