

## AccuBridge for Serena® TeamTrack®

AccuBridge™ for Serena® TeamTrack® provides out-of-the-box integration between AccuRev® software and Serena TeamTrack to quickly leverage the power of AccuRev's process change management with your existing Serena issue tracking system. The result enhances your return on investment by increasing the agility, reliability, and quality of your distributed and parallel software development environment.

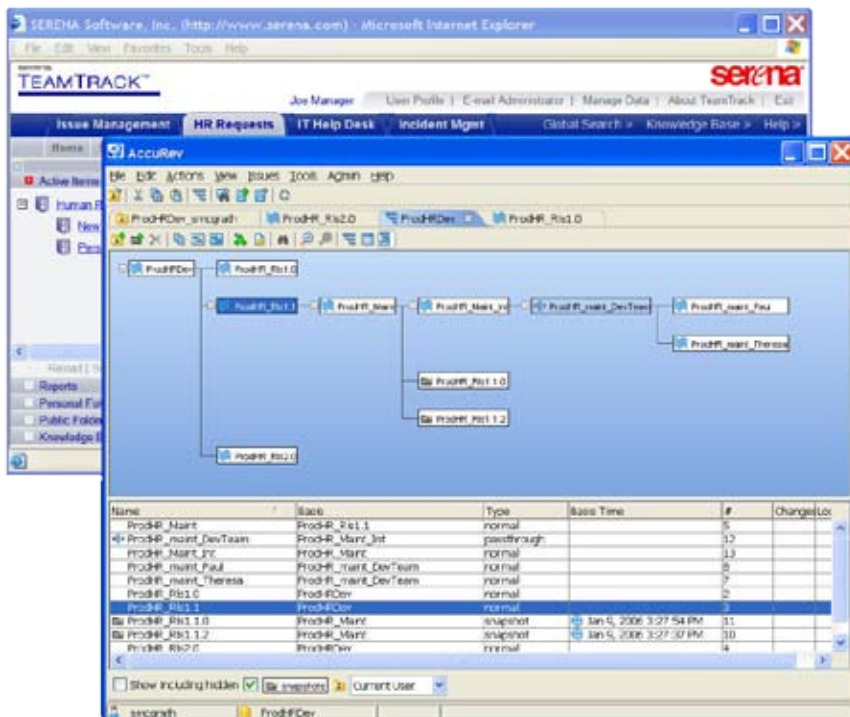
### The Power of AccuRev

AccuRev® provides enterprise software configuration management (SCM) and architecturally enabled process model optimization for highly distributed application development. AccuRev's award-winning SCM architecture has been designed specifically to simplify complex parallel development projects, ensuring optimal team collaboration, outsourcing models, software asset reuse, and time to market that far exceeds the capabilities of legacy SCM tools.

AccuRev forms the core of a true best-of-breed, multi-vendor application lifecycle management (ALM) solution, with unique capabilities which enhance and extend complementary development tools. This provides you with maximum control by

## Features

- Out-of-the-box integration between AccuRev software and Serena TeamTrack to enable robust integration between software asset changes and issues
- Support for AccuRev change package integration
- Integration of Serena TeamTrack issues and AccuRev
- Written in Perl for easy customization



*AccuRev and Serena TeamTrack work together to tie the daily work of your software development process to the issues managed in the issue tracking system.*

offering the flexibility to choose the best lifecycle tool for your unique requirements, versus being locked in to a tool offered by a single-vendor suite. The result is an ideal mix of productivity with traceability and auditing for distributed and parallel projects and teams of all sizes.

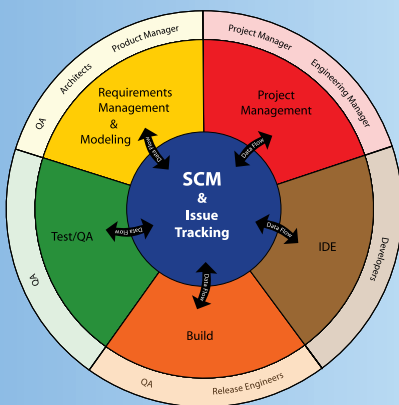
### Integrate AccuRev and Serena TeamTrack

AccuBridge for Serena TeamTrack enables developers to tightly integrate AccuRev with Serena TeamTrack. AccuBridge integration supports batch transfers or automated transfers from Serena TeamTrack into the AccuRev issue tracking system. The power of AccuRev's fully integrated change package feature is also available to users, enabling seamless process workflow between AccuRev and Serena TeamTrack. This leverages your current issue tracking investment while accessing the benefits of AccuRev change packages for robust workflow associated with source code changes. AccuBridge for Serena TeamTrack provides robust data mapping features that allow data type transformation between Serena TeamTrack and AccuRev. This ensures that in your integrated environment, critical data is preserved between AccuRev change packages and Serena TeamTrack.

## The AccuBridge Advantage

- Implement a best-of-breed Application Lifecycle Management (ALM) solution by deploying AccuRev with Serena TeamTrack.
- AccuBridge for Serena TeamTrack provides comprehensive interaction between AccuRev software and Serena TeamTrack.
- Send updates from Serena TeamTrack to AccuRev's issue tracking system with no loss of data.
- Store and monitor AccuRev change package activity from within Serena TeamTrack.

**Supported Platforms**  
Serena TeamTrack 6.3 with  
XML Bridge v 2.0 supported



**AccuBridge enables an optimal  
multivendor ALM solution**

# AccuRev