

AccuBridge for Rally

AccuBridge™ for Rally™ provides out-of-the-box integration between AccuRev® software and Rally's Agile Lifecycle Management Solution. This integration enables you to quickly leverage the power of AccuRev's process change management with your existing Rally solution. The result enhances your return on investment by increasing the agility, reliability, and quality of your distributed and parallel software development environment.

The Power of AccuRev

AccuRev provides enterprise software configuration management (SCM) and architecturally enabled process model automation and optimization for complex application development. AccuRev's award-winning SCM architecture has been designed specifically to simplify complex parallel development projects, ensure optimal team collaboration, support outsourcing models, increase software asset reuse, and reduce time to market far exceeding the capabilities of legacy SCM tools.

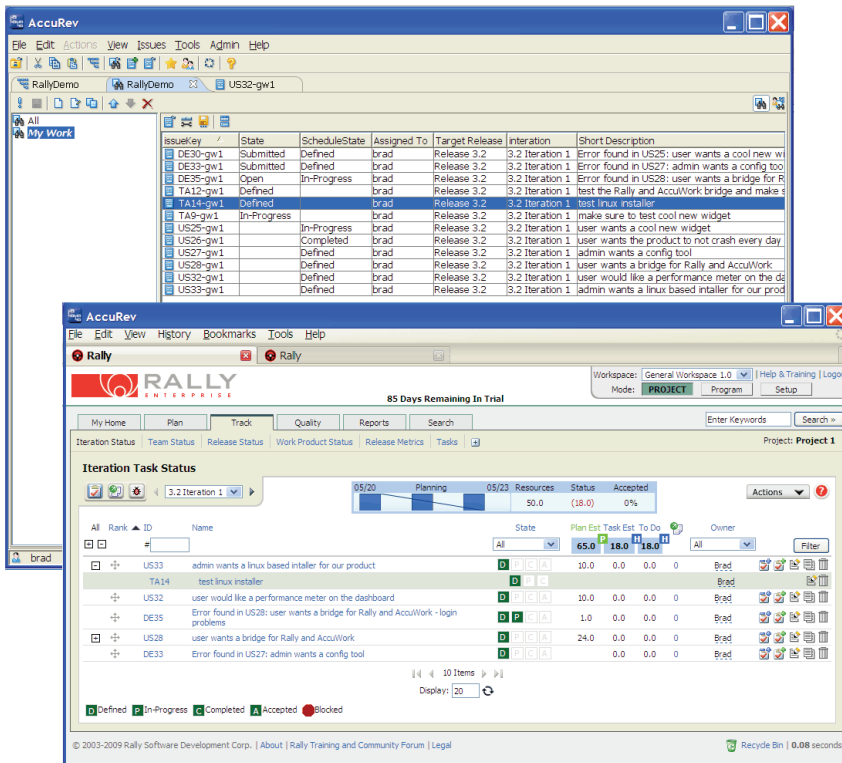
Since Agile processes rely on fast moving requirements, rapid code changes, shorter development cycles and high levels of Software Process Automation, the demands on SCM and other tools are different than for traditional methods such as Waterfall. AccuRev enables development teams to implement and manage both Agile and non-Agile development processes with its comprehensive feature set.

Features

- Out-of-the-box integration between AccuRev software and Rally software to enable robust integration between software asset changes and Rally defects/issues, tasks, and stories
- Easy to customize, configure, and extend
- Supports bi-directional AccuRev Change Package integration for issue-based engineering utilizing Rally
- Synchronized updates between Rally and AccuRev
- AccuRev SCM and Change Package data mapped to fields in Rally for easy tracking

The AccuBridge Advantage

- Implement a multivendor Application Lifecycle Management (ALM) solution by deploying AccuRev with Rally for Agile software development
- AccuBridge for Rally provides comprehensive interaction between AccuRev software and Rally Agile Lifecycle Management Solution
- Store and monitor AccuRev SCM and change package activity within Rally
- Supports a robust SCM integration with Rally's Agile project management capabilities



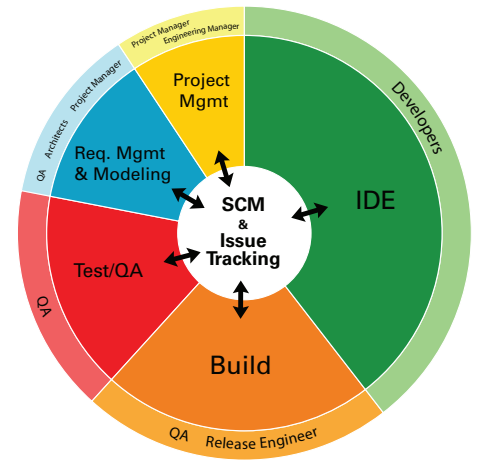
AccuRev forms the core of a true best-of-breed, multi-vendor application lifecycle management (ALM) solution, with unique capabilities which enhance and extend complementary development tools. This provides you with maximum control by offering the flexibility to choose the best lifecycle tool for your unique requirements, versus being locked in to a tool offered by a single-vendor suite. The result is an ideal mix of productivity with traceability and auditing for distributed and parallel projects and teams of all sizes.

Integrate AccuRev and Rally

AccuBridge for Rally provides tight integration between AccuRev and Rally, which automates manual error-prone processes, thereby making team collaboration more efficient. The AccuBridge for Rally integration supports automatic synchronization of data between Rally and AccuRev. AccuBridge for Rally provides a robust data mapping feature, with full support for synchronization of Rally defects, tasks and stories into AccuRev, offering a truly comprehensive integrated environment for Agile software development.

AccuBridge for Rally provides full support for bi-directional change package integration. Developers can continue to utilize issue-based development best practices, while taking advantage of full synchronization with Rally. Additionally, developers can promote their code against specific Rally objects from within AccuRev. When changes are made within AccuRev, full visibility of these source code modifications can be viewed directly from Rally.

With AccuBridge for Rally automating the integration between AccuRev and Rally, critical data is preserved between AccuRev issues and change packages and Rally improving the traceability and integrity of all development work.



AccuBridge enables an optimal Best-of-Breed ALM solution

“To mitigate difficulties stemming from the early stages of technologies for globally distributed application development, enterprises should consider combining innovative technologies from emerging vendors, as well as proven technologies from established vendors, and cementing them with methodologies such as project management, Capability Maturity Model and Rational Unified Process.”

Jim Duggan

Research VP, Gartner, Inc.

AccuRev

Contact AccuRev:

AccuRev Inc., 10 Maguire Road, Lexington, MA 02421
Phone: 800-383-8170 | Email: sales@accurev.com | www.accurev.com

© 2009 v47. All Rights Reserved. AccuRev, AccuWork, AccuReplica, and AccuBridge are all trademarks or registered trademarks of AccuRev Inc. All other marks are property of their respective owners.